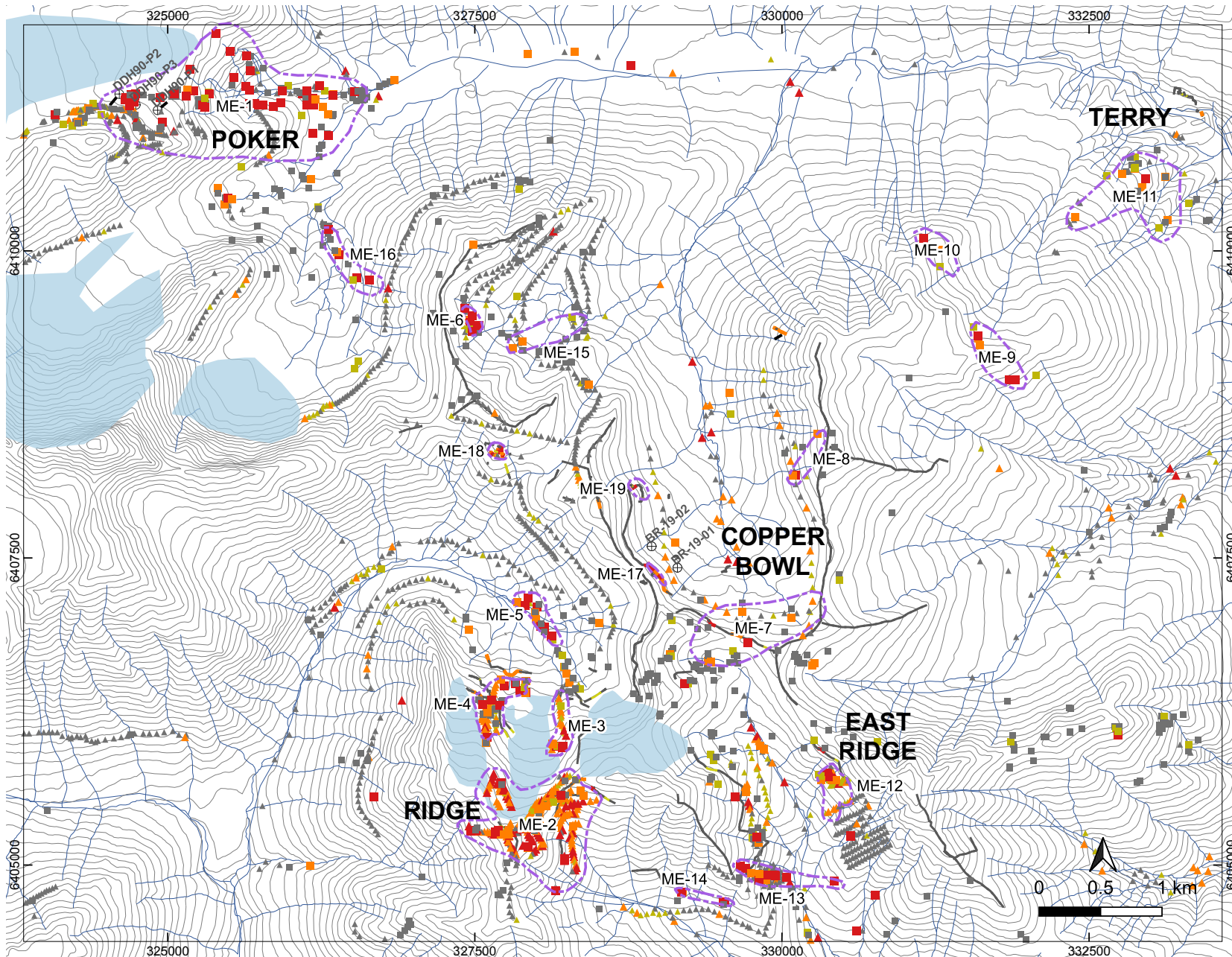


Figure 1
Multi-element anomalies and gold samples



Surface Geochemistry

- Multi Element Anomaly
- Rocks by Au (ppm)
 - < 0.05
 - 0.05 - 0.1
 - 0.1 - 0.5
 - > 0.5
- Soil, Silt, & Grab by Au (ppm)
 - ▲ < 0.05
 - ▲ 0.05 - 0.1
 - ▲ 0.1 - 0.5
 - ▲ > 0.5
- Continuous Rock Chip by Au (ppm)
 - < 0.05
 - 0.05 - 0.1
 - 0.1 - 0.5
 - > 0.5

- Drilling**
- ⊕ Drill Collars

- Base Data**
- Contour 40m
 - Glaciers

